

Highlights

- 1200 watt power
- 3 temperature levels including cooling level
- Ceramic coating
- 360 °-rotatable cable
- Narrow dimensions
- Brush head with 260 bristles
- Dust filter on the air inlet
- Quieter than conventional hairdryers



Be Cool 4in1 Warm Air Brush (DRY, SMOOTH, STYLE & BRUSH)

The Be Cool 4in1 warm air brush is suitable for all hair types (as well as hair extensions).

The Negative Ion Styling Technology eliminates frizz, static, and split ends. The heating process generates a lot of negative ions that can reduce damage to the hair root and make hair shinier and smoother.

The 360° - air passage and the high-quality ceramic coating provide better air and heat coverage and ensure better heat distribution and faster drying.

Reduce the drying time by half and save valuable time!

The two massage balls of different lengths provide more space between the hair. Your hair becomes soft, smooth, elegant and shiny.

The lightweight ergonomic design and 360° rotating cable ensure maximum comfort and ease of use.

Avoid heat damage and take care of your hair with the Be Cool One Step 4in1 warm air brush.

Negative Ion Styling Hair Dryer

The heating process generates a lot of negative ions that can reduce the damage to the stratum corneum of the hair and make the hair shinier and smoother.

Curling & Smoothing

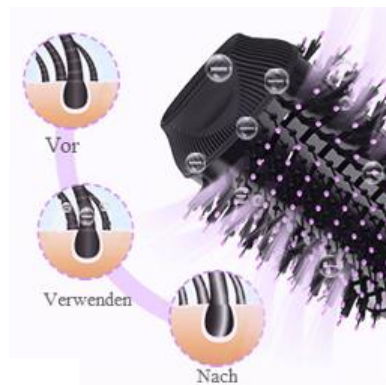
Two massage balls of different lengths provide more space between the hair and speed up drying. Roll up to create curls and comb straight down to smooth the hair.

Unique ventilation openings

The 360 ° air diffuser provides better air and heat coverage for better heat distribution and faster drying. Straighten your hair easily and make your hair shiny and light.

**Negative Ion Styling Hair Dryer**

The heating process creates a lot of negative ions that can reduce damage to the hair root and make hair shinier and smoother.

**Unique ventilation openings**

The 360 ° air diffuser provides better air and heat coverage for better heat distribution and faster drying. Straighten your hair easily and make your hair shiny and light.

Curling & Smoothing

Two massage balls of different lengths provide more space between the hair and speed up drying. Roll up to create curls and comb straight down to create straight hair .

**The 360 ° rotatable cable**

360 ° rotatable design cord prevents snagging and pulling, the cord does not twist and you can style your hair more comfortably at any angle.

Technical data

- 1200 watt power
- Input voltage: 220 - 240 V
- Frequency: 50 Hz
- 3 temperature levels including cooling level
- High-performance turbine
- Rotatable cable
- Narrow dimensions
- Brush head with 260 bristles
- Dust filter on the air inlet
- Thermally insulated top
- Quieter than conventional hairdryers
- Dimensions - (height x width x depth): 340 mm x 110 mm x 90 mm
- Power cord: 180 cm
- Handle diameter: 3-6 cm
- Weight: 0,54 kg
- Internal art.no.: BCOSWB2219
- Colour: Black / Rose gold
- EAN: 9005151002058

Warranty period

- 2 years

Österreichische
Marke



SCHUSS
HOME ELECTRONIC

Scheringgasse 3
1140 Vienna
Phone +43 1 970 21-177
www.schuss-home.at