

Highlights

- **Power**
1200 watt
- **3 temperature levels**
Cooling stage included
- **Compact**
Small dimensions
- **Practical**
360° rotatable cable
- **Ceramic coating**
and brush head with 260 bristles
- **Low maintenance**
Dust filter at the air inlet
- **Quiet**
compared to conventional hairdryers

BE COOL One-Step 4in1 Warm Air Brush (DRY, SHINE, STYLE & BRUSH)

The Be Cool One-Step 4in1 warm air brush is suitable for all hair types (as well as hair extensions).

The negative ion styling technology eliminates frizz, static, and split ends. The heating process generates a lot of negative ions that can reduce damage to the hair root and make hair shinier and smoother.

The 360° air passage and high-quality ceramic coating provide better air and heat coverage and ensure better heat distribution and faster drying.

Cut drying time in half and save valuable time!

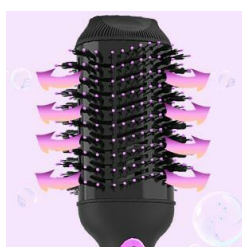
The two massage balls of different lengths provide more space between the hair. Your hair will be soft, smooth, elegant and shiny.

The lightweight ergonomic design and 360° rotating cable ensure maximum comfort and ease of use.

Avoid heat damage and take care of your hair with the Be Cool One Step 4in1 hot air brush.

Negative ion styling hair dryer

The heating process creates a lot of negative ions that can reduce damage to the hair root and make hair shinier and smoother.



Unique ventilation openings



Curling & Smoothing



360° rotatable cable

Unique air vents

The 360° air vent provides better air and heat coverage for better heat distribution and faster drying. Straighten your hair easily and make your hair shiny and light.

Curling & straightening

Two massage balls of different lengths provide more space between the hair and speed up drying. Curl up to create curls and comb straight down to create straight hair.

Rotating cable

The 360° rotating design cord prevents snagging and pulling, the cord won't twist and you can style your hair more comfortably at any angle.

Scope of delivery

- Hot air brush
- Operating instructions

Warranty period

- 2 years



Front view



Oblique view lying



Detail view 1



Detail view 2



Detail view 3

Specifications:

- 1200 Watt power
- Input voltage: 220 - 240 V
- Frequency: 50 Hz
- 3 temperature levels including cooling level
- High performance turbine
- Rotatable cable
- Compact dimensions
- Brush head with 260 bristles
- Dust filter at air inlet
- Thermally insulated top
- Quieter than conventional hairdryers

Dimensions:

- Product (height x width x depth): 340 x 110 x 90 mm
- Handle diameter: 30-60 mm
- Power cord: 180 cm
- Weight: 0.54 kg